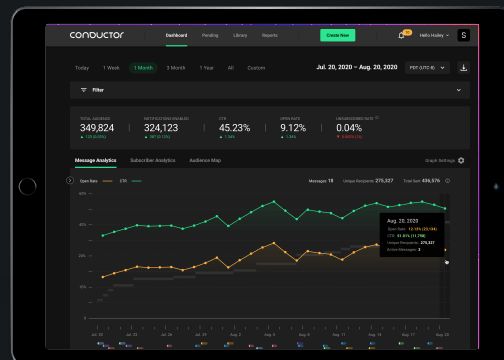


CONDUCTOR

Engage your audience with omni-channel marketing.

CONNECT WITH YOUR AUDIENCE

Flexible to your business, Conductor is a one-stop shop for your marketing communications. With the ability to create, approve, and monitor messages in one place, Conductor allows your team to streamline marketing strategies and improve customer engagement. Build a personalized relationship between your audience and your brand through unique marketing campaigns that accurately segment messages and encourage user retention.



RESULT-DRIVEN MESSAGING TO IMPROVE YOUR BUSINESS

- **Save Money:** Lower cost on marketing and promotions
- **Improve Marketing:** Boost customer engagement and retention
- **Save Time:** Manage marketing channels such as push notifications, SMS, and email in one place.
- **Gain Real-Time Insight:** View message KPIs and monitor how your messages are performing with your audience.

Feature Highlights



Real-Time Analytics

Monitor segment growth and sentiment in real-time.



Dashboard

View analytics on open, tap, and engagement rates for the last 5 messages sent through the portal.



Omni-Channel Communication

Reach your target audience through push notifications, emails, SMS, and more.



Geofence Creation

Trigger marketing messages based on user location.



Conductor Companion App

Access Conductor from the convenience of your smartphone.



Cloud Source

Share files for notification segmentation safely and securely.



HTML Builder

Provide media rich content to your users without needing to know HTML code.



Conjunction

Integrate with Junction to translate and globalize your messages.



Campaign Builder

Set up multi-message campaigns based on business logic, customer lifecycle, customer habits and more.

station



Engage with your users today

Contact us to find a plan that works for you.

Learn more: stationdigitalmedia.com/conductor

Station provides our clients with seamless user experiences by combining cutting edge development with sophisticated design.